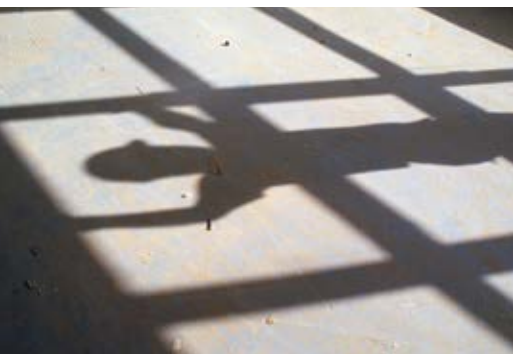




Putzmeister



Truck-mounted concrete pump M63

The “big daddy” that can handle even the largest construction sites

Efficiency is the sum of
higher, faster, further



Additional range has never been safer – introducing the M63

Its speciality: Large construction sites that call for massive operating ranges and high pumping rates. Despite being one ton lighter, the M63 can handle even the most demanding of challenges. The robust placing boom also carries the whole length of the delivery line, which has a nominal diameter of DN 125. It is also quite modest in terms of space requirements: Thanks to the One Side Support, it manages perfectly on construction sites with limited room.

The innovative Ergonic® 3 control system ensures intuitive and safe operation. And just like all machines from the new generation, the M63 saves up to 45 % of oil thanks to the new hydraulic concept – and with that, it not only saves on costs, but on weight as well. The iLS core pumps and Ergonic® Output Control (EOC) 2.0 provide greater performance with reduced resource consumption.

Putzmeister promise

The name Putzmeister stands for machines that enable you to work with extreme productivity and go beyond purely being competitive. To this end, we provide extraordinarily innovative technologies alongside top quality and excellent service. We are fully dedicated to supporting you both around the world and around the clock. And this is because every Putzmeister employee recognizes that your machine has important jobs to do.

Your Putzmeister Team

The placing boom – precise and smooth with optimum use of space

Maximum capacity utilisation, minimum maintenance costs

Robust components with high wear resistance, many maintenance-free and standard components.

Fewer movements needed, increased service life

Thanks to the boom central lubrication, the machine operator does not need to climb on the machine – the M63 lubricates the first placing boom cylinder and the four-point bearing and hub independently. This is not just faster and more cost-effective; it also increases the service life of components under significant stress.

ROBUST AND MAINTENANCE-FREE COMPONENTS
+ BOOM CENTRAL LUBRICATION
+ HIGH WEAR RESISTANCE
= PUTZMEISTER PERFORMANCE

Precise, easy and safe to operate

The boom control's fast response characteristics, the sophisticated routing of the delivery lines and the robust steel structure ensure precise, smooth movements. This makes its start-up behaviour particularly gentle thanks to a slewing gear drive which has been improved even further.

Even more comfort with EBC (Ergonic® Boom Control)

The fully electronic control system with integrated vibration damping enables the end hose to be guided continuously. The boom can be moved even more smoothly using the joystick in one-handed operation. Limiting the working area or locking arm positions increases occupational safety.

ergonic[®]
inside 3



The new boom at a glance

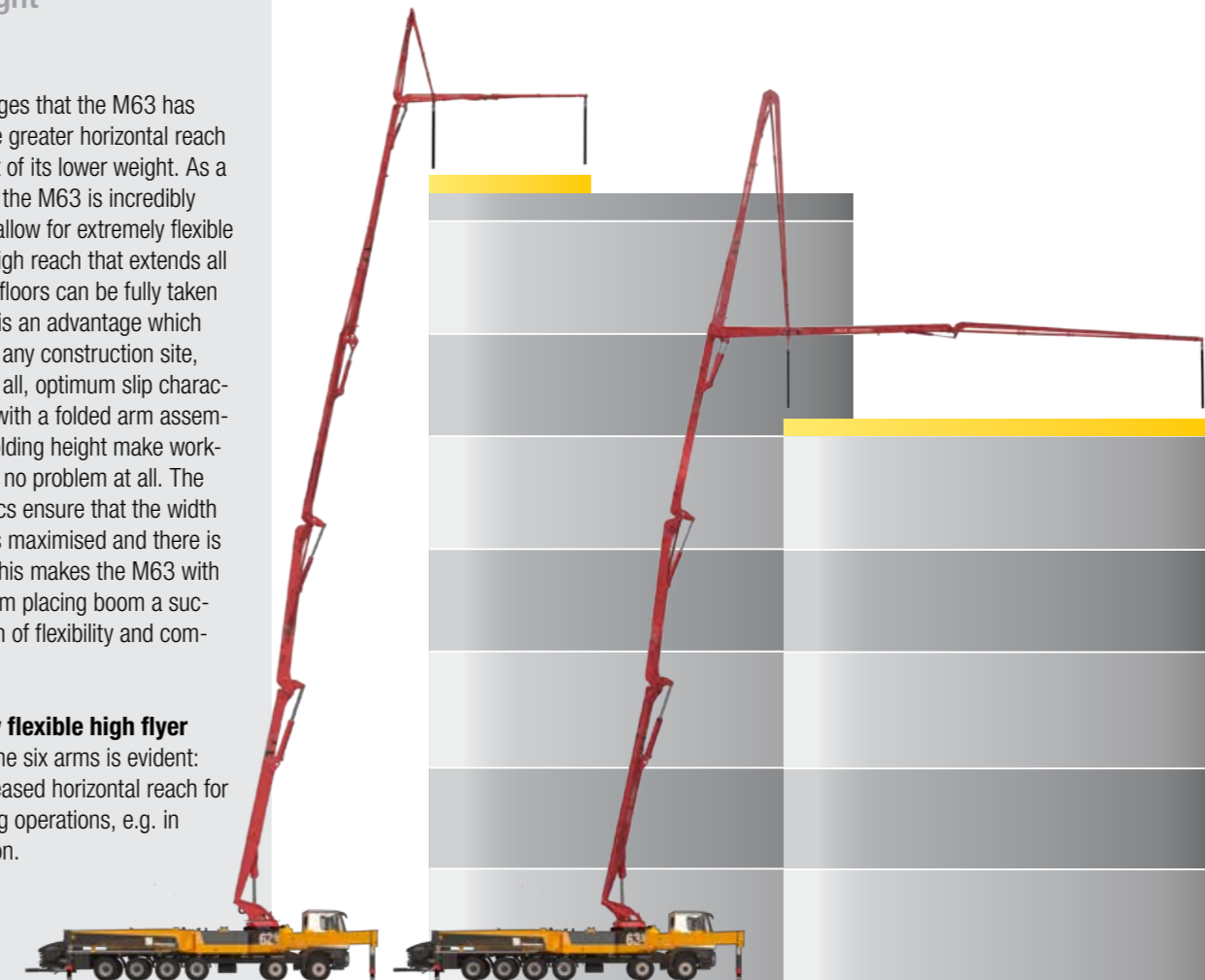
- Approx. 63 m vertical reach with 5 arms in RZ fold system
- No dead space, more flexibility
- Continuous delivery line with nominal diameter of DN 125
- Option of DN 117 nominal diameter for increased boom tip load
- Fast response characteristics of boom control
- Safety thanks to reduced boom vibrations
- EBC for vibration damping, one-handed control and limitation of workspace (optional)
- Central lubrication of boom as series for first placing boom cylinder and the four-point bearing
- Standard 90° and 45° elbows, with lengthened collars for a longer service life

Greater reach through reduced weight

One of the advantages that the M63 has over the M62 is the greater horizontal reach it offers on account of its lower weight. As a result, the boom of the M63 is incredibly agile. Its five arms allow for extremely flexible working. And the high reach that extends all the way into upper floors can be fully taken advantage of. This is an advantage which comes in handy on any construction site, even indoors. After all, optimum slip characteristics, swinging with a folded arm assembly and its low unfolding height make working inside buildings no problem at all. The optimised kinematics ensure that the width of the workspace is maximised and there is no "dead space". This makes the M63 with an RZ folding system placing boom a successful combination of flexibility and compactness.

The M62 – a fully flexible high flyer

The advantage of the six arms is evident: They allow for increased horizontal reach for very high concreting operations, e.g. in building construction.



The base structure – stable and adaptable for almost any setup situation



Support in an ideal line

Thanks to the TRDV support developed by Putzmeister, you save time and space in setting up your machine. The increased amount of space available is also of benefit to the operator, since in addition to allowing greater freedom of movement and a larger safety zone, it provides room for practical tool-boxes.

Narrower support with OSS and iSC
With OSS* (One Side Support) narrow support and iSC (intelligent Setup Control)**, the small support width is reduced even further. An important side effect: Full use is made of the net reach for the fully supported side.

* OSS – Assistance device for One Side Support, optional.
** iSC – Safety system for One Side Support according to EN 12001:2012..



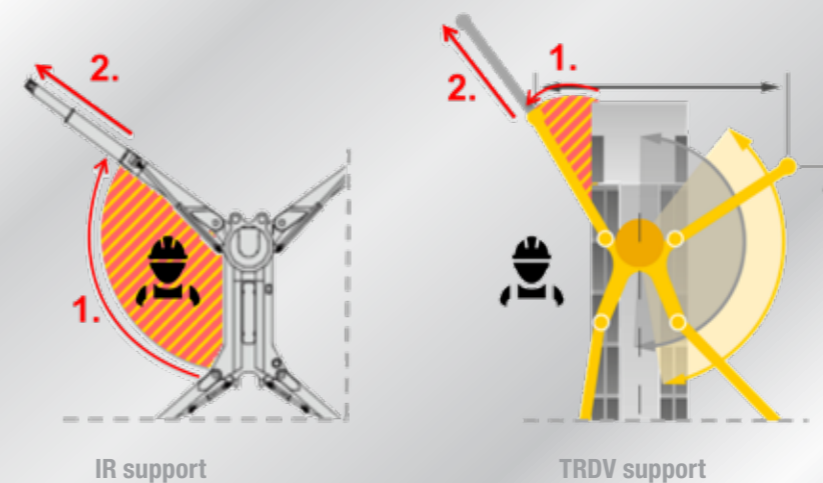
Profit from every application

The M63 fulfils the strictest approval regulations when it comes to its weight, especially in the USA. It offers plenty of additional load reserve and is therefore ideal for working on job sites which require more accessories. There is sufficient storage space available thanks to extended swinging support legs and the wide flatbed with an anti-slip surface. Additional design and construction details make the base structure particularly robust: The clamping length of the front telescopic support legs and the boom pedestal, which is compact and made of a single piece of material.

The base structure at a glance

- **Low unladen weight** offers high weight reserves
- **More robust and more stable base structure** due to a number of innovative details
- Flexible, space-saving **TRDV support system**
- **Significantly reduced support widths** with the use of OSS* and iSC** for restrictive setup conditions
- **Saves money** thanks to maintenance-free components, comprehensive screw concept, standard components and I-frame concept for improved distortion characteristics

* OSS – Assistance device for One Side Support, optional.
** iSC – Safety system for One Side Support (according to EN 12001:2012)..



Benefits of the TRDV support

- **Lower space requirement** for supporting the machine
- Potential space for **toolboxes** through TRDV support
- **Safe area** for the machine operator during the complete support setup procedure

Cost-effectiveness with a long service life

TRDV is particularly impressive when it comes to force distribution. If the machine is correctly supported on its legs, the forces acting on it are completely distributed over the support legs, protecting the vehicle. The I-frame and connection concept also ensures a longer service life than that of rigid frames.

The concrete pump – clever interaction of all components



Strong unit for every type of concrete

Concrete pumps from Putzmeister are designed for all common types of concrete with their coordinated geometry. On the one hand, this is thanks to the closed free flow hydraulic circuit. The drive transfers more power and saves resources because the oil reaches the cylinder with minimal losses.

In addition, the Ergonic® blue, the new Putzmeister concept for improved sustainability, integrates a new hydraulic fluid management system into the control system.

This new technology not only enables the necessary quantity of hydraulic fluid to be reduced by up to 50% – it also allows the use of environmentally friendly organic fluid. A further success factor is the S transfer tube point, which has a long service life even with wear-intensive materials because the S transfer tube was reinforced with build-up welding.



You choose the power

Like all Putzmeister truck-mounted concrete pumps, the M63 is available with different pumps with a delivery pressure of 85 bar: The 16H with two chromium-plated delivery cylinders (dia. 230 mm), which is cheaper in comparison, and the smoother 16HLS resp. 17iLS / 19iLS (dia. 250 mm). They offer a delivery rate of up to 190 m³/h, but the LS version has a lower number of strokes and is thus subjected to less wear.

The enhanced 17iLS / 19iLS with numerous improvements:

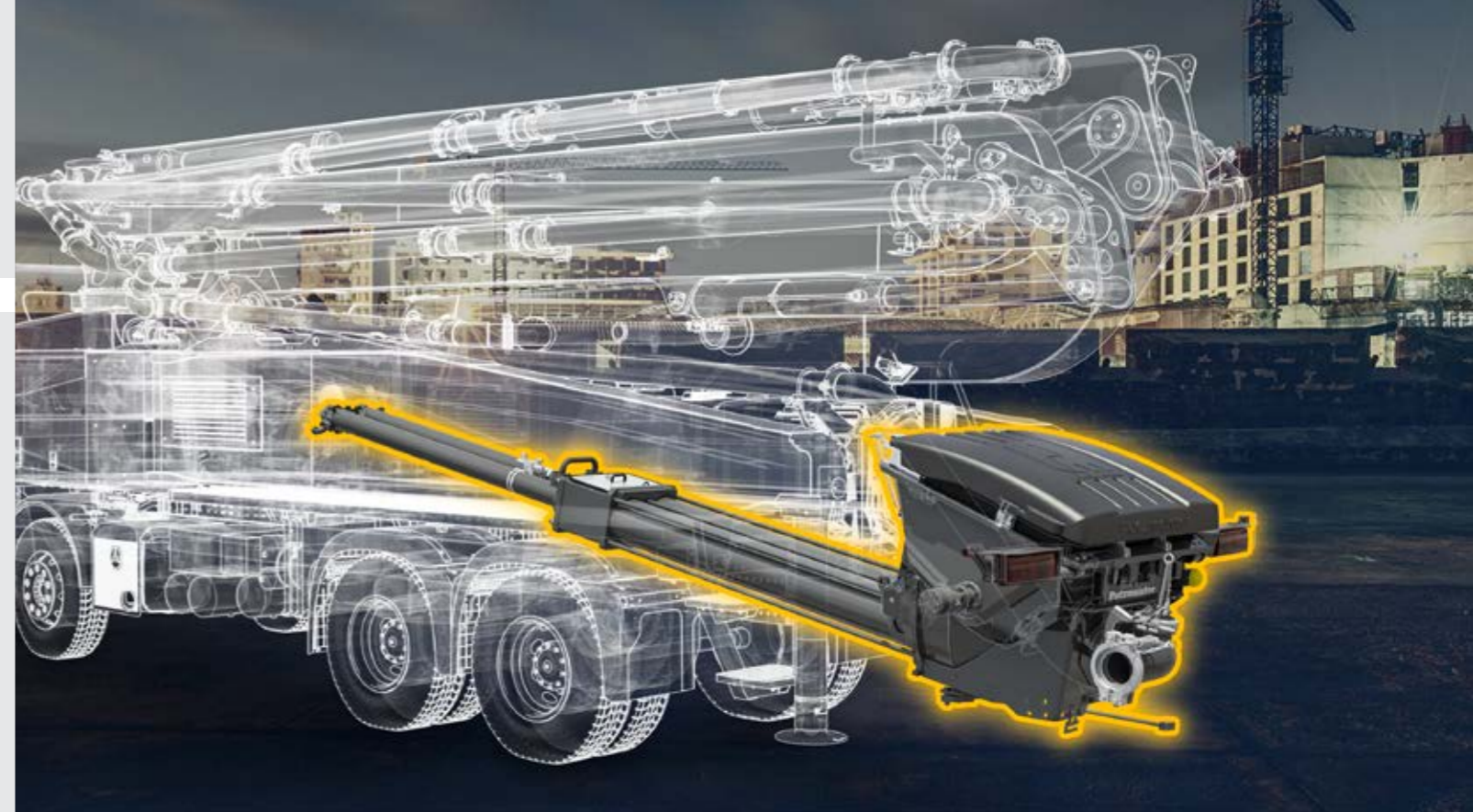
- **Fuel saving of up to 25% with EOC 2.0** (field tested with multiple pumps for international applications)
- **More efficient pumping:** Oil leaks prevented by improved sealing system
- **Better pump start-up behaviour**
- **Longer service life** thanks to robust S-tube bearing

Pumps

Type	Output m³/h	Pressure bar	Stroke mm	Cylinder Ø mm	Strokes/min
16 H	160*	85	2100	230	31
16 HLS	160*	85	2100	230	27
17 iLS	170*	85	2100	250	27
19 iLS	190*	85	2100	250	30

All data represent theoretical maximum values.

* Rod/piston side. Max. outputs and max. delivery pressures cannot be operated at the same time.



Optimal coordination thanks to EPS

The computer-aided control system of the pump ensures a better performance via EPS (Ergonic® Pump System). EPS controls the pumping process using computers, so that it is smoother overall and the boom vibrations are reduced. Besides EPS, EOC (Ergonic® Output Control) is an effective module to work efficiently.

Because EOC controls the engine speed with lower fuel consumption, wear and noise. Unfavourable areas are automatically avoided. The same applies to the SN control system and Push Over. They ensure that the concrete column is pushed very gently and wear-intensive pressure peaks are avoided.

The pump at a glance

- **Pump geometry is optimally** coordinated to all common types of concrete
- **Service-friendly control system** with free flow hydraulics and thus consistently high oil quality
- **Particularly wear-resistant** design of S transfer tube switch, which guarantees long service life
- **Optimised hopper** (screwed-in grille, improved shape and optimised S transfer tube storage)
- **Agitator safety shutdown via RFID** (Radio Frequency Identification), a detection system using electromagnetic waves, including start-up protection
- **Smooth, optimised pumping** with EPS and EOC, protects the pump and the vehicle
- **Optimised switchover procedure** with SN control system and Push Over avoids wear-intensive pressure peaks
- **Convenient and simple operation with Ergonic® 3**, the latest concept for control hardware and software from Putzmeister
- **Minimum operating costs** thanks to maintenance-free components, avoidance of special components and good accessibility
- **Easy replacement of components** due to screw concept, e.g. support cylinder
- **Automatic agitator direction of rotation corresponds to pumping direction**

Ergonic® 3 – precise, intuitive and reliable!

Dedication in every respect

Ergonic® inside means that the machines are quickly ready for use and they work with high power, fuel efficiency and low wear. And most importantly for machine operators: **Work becomes easy!**



ergonic[®]
inside 3



Intelligent boom control – an unrivalled dimension of convenience and precision

The performance level of a truck-mounted concrete pump is evident in how precisely, quickly and safely the boom can be moved and positioned. As a pioneer in intelligent boom control systems, Putzmeister has already demonstrated how user-friendly a concrete pump can be with the EBC.

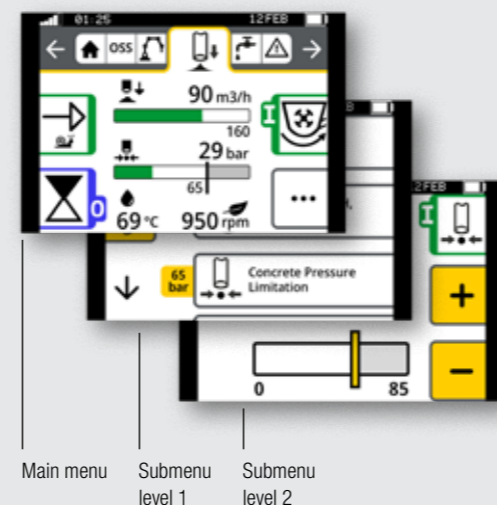
With **iBC (Intelligent Boom Control)**, this system is now improved again – setting new standards for convenience and precision.

The new Ergonic® 3 – clear, fast and safe

- Continuous operating concept for all Putzmeister products with the same functions and displays – whether on the radio remote control or the Ergonic® Graphic Display (EGD).
- Intuitive work and quick reactions thanks to a clear menu structure and intuitively arranged functions.
- Full overview of machine status on the radio remote control and EGD (incl. valves, sensors, LEDs on fuses).
- Detailed fault management: Faults are easy to detect and rectify – even without a Putzmeister technician.
- Multi-level emergency operation keeps the machine running even in the toughest conditions and in virtually every case.

Keeping an overview – in every situation

- The “static” menu bar guides users through the menu – with no chance of “getting lost”.
- Neatly and intuitively arranged functions.
- Simple menu structure with a maximum of two submenu levels.
- Main menu with all standard functions and additional details in submenus.



Extremely precise boom movements – iBC (Intelligent Boom Control)

- **Unrivalled convenience**
The patented iBC control system makes it easy for machine operators to control the boom with the joystick using just one hand. As a result, the end hose can be moved forwards, backwards or diagonally at the preselected height with a great deal of precision.
- **Unrivalled precision**
The latest Putzmeister development is a big hit with machine operators: iBC made it possible to improve the boom's response characteristics and precision by another 80 %. The advanced boom damping delivers a stable, steady arm assembly at high delivery rates.
- **Unrivalled ease of folding**
Folding and unfolding the arm assembly has never been this easy. With iBC, the boom movements are optimised for the exact machine model. Standard movements are carried out quickly and easily.

Consistent concept on all “switching centres”

- The menu structure is nearly identical on the remote control and the graphic display.
- Hardware and software are perfectly matched at all operating positions.
- The same intuitive operation on all Putzmeister products – without requiring a lot of training.



The additional screen on the control cabinet uses the same concept and offers a variety of information, settings and options.

Our most supportive system ever – iSC (Intelligent Setup Control)

With the iSC (Intelligent Setup Control), Putzmeister is raising the stability of concrete pumps to a whole new level. The successor to the proven ESC system offers a significant improvement in terms of machine reach and flexibility.

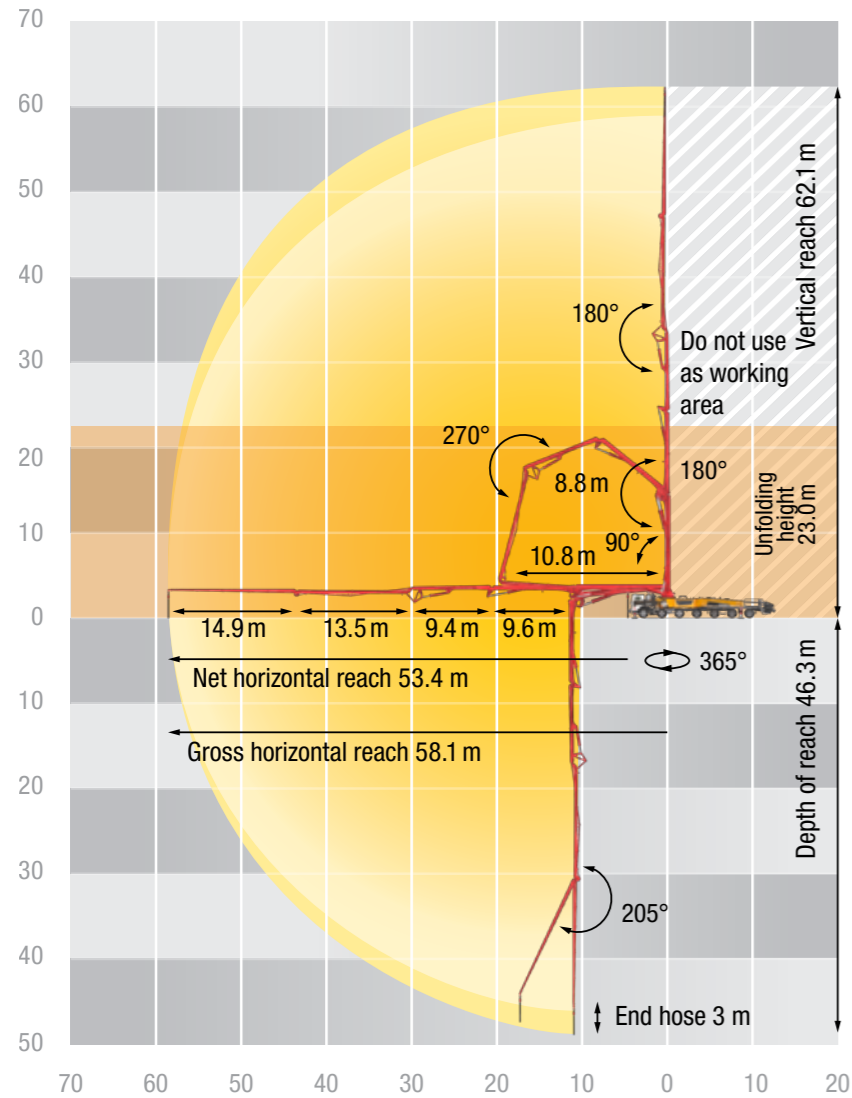
On the safe side – now more than ever

- **Maximum versatility** Optimum support options to suit the space available on-site. Even in the most difficult of conditions.
- **Maximum reach** Perfect interaction – the reliable reach prediction allows machine operators to utilise the robust steel structure of Putzmeister machines to their fullest potential.
- **Maximum safety** 100 % safety, no small print. Guaranteed stability in any situation. The patented drop warning and the possibility of providing additional support help machine operators in difficult conditions.



Technical data

M63



Placing boom

Folding type	5 arm RZ fold system
Vertical reach	62.1 m
Horizontal reach	58.1 m gross
Depth of reach	46.3 m
Unfolding height	23.0 m
End hose length	3 m
Delivery lines	DN 125, max. 85 bar
Slewing circle	365°

General

Support width	front	/ rear
Standard	12.4 m	/ 12.2 m
OSS	7.5 m	/ 8.3 m
iSC	2.6 – 12.4 m	/ 2.6 m – 12.2 m
Overall length	15.9 m	
Height	under 4.0 m	

Support width based on center of support leg

Equipment options

To make it easier to select from the numerous configuration options, three comprehensive equipment lines, as well as a few option packages, are available.

Standard Ausstattung

Diese Ausrüstung beinhaltet Konzepte wie ein Platz für einen Stützanker, ein robustes Standard-Strukturwerkzeug für die Arbeitssicherheit. Gemäß der Normen EN 12014/1 und EN 12014/2 ist die Maschine für den Einsatz in Europa geeignet.

High line

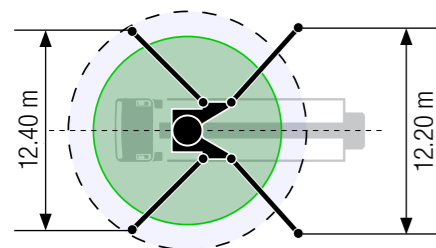
Erhöht die Erreichbarkeit und die Flexibilität, während die maximale Last und die maximale Leuchte mit der High Line möglich.

Exclusive line

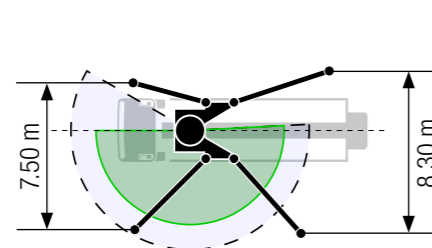
Dies ist die neueste und höchste Ausrüstung mit einer erhöhten Platzhöhe und einer erhöhten Leuchte mit der High Line möglich.



Standard – Full support

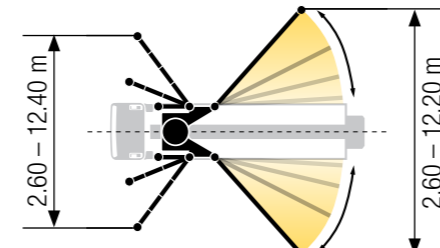


OSS* – One-side support



* non EEA, no CE marking

iSC** – Full-flexible support



** EEA, CE marking

Build on Putzmeister – in service, parts, training

Everything that sets service apart

Swift assistance, meaningful advice and a reliable supply of genuine Putzmeister accessories and parts - in over 120 countries worldwide. This is what we at Putzmeister understand as first-class service.

Ideally placed to support you

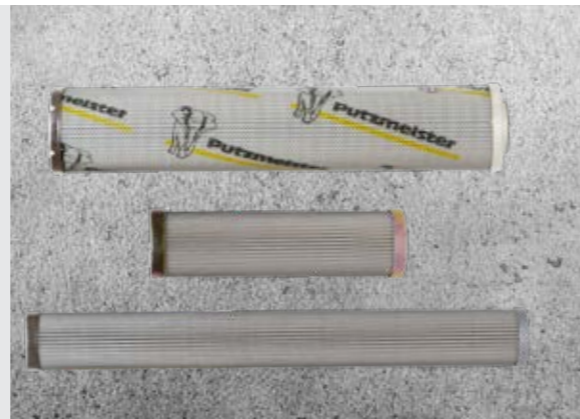
We train our service technicians continuously, provide a close-knit information network and the latest equipment and consistently strive to meet our customers' needs.

Thanks to state-of-the-art technology, our employees have all the relevant technical information about your machine at their fingertips, should the need arise. Allowing us to provide you with the best possible support for emergencies, repairs or preventive maintenance.



Genuine parts for maximum availability

It goes without saying that we use only genuine Putzmeister parts in our workshops. This is the only way to guarantee consistent quality, checked for interoperability. And you can be absolutely sure that your machine meets the tough requirements with maximum performance and availability.



Excellent in quality and customer proximity

In case of need, you have two options: Either the service team visits you or you take your machine to one of our service workshops. The latest tools, software analysis solutions and genuine parts ensure that your machine is operable again immediately.

All Putzmeister workshops and the workshops of our international Putzmeister partners meet our high-quality standard. Especially when it comes to manufacturer's inspections and acceptance procedures in accordance with specifications.



Induction at handover – everything correct from the outset

So you and your machinist can adapt perfectly to all special features and innovations.

Customer training – benefit from expert knowledge

Practice-oriented learning offers many benefits: Your staff master the machine with all its special features, use the machine to optimum effect, reduce operating costs and avoid operating errors.

Our services for cost-effective work

The Putzmeister service support points offer you these services - all provided by our experienced service staff:

100 hours of customer service – avoid potential sources of error

With this customer service you receive a status report on your concrete pump as per the Putzmeister service plan.

Mandatory machine inspection – calculable costs instead of incalculable failures

Visual inspection and functional check of components for 100 % safety. The hydraulic system with cylinders, electrical system and core pump are also inspected.

500 hours of customer service – protect your investment, retain your value

Our technical customer service team is the number one choice for checking the safety and wear of your machine. You receive a status report for this, too.

Our range of training courses and seminars:

For concrete pump operators

- Training and development seminars on concrete pumps
- Training and development seminars on PUMI with piston and rotor pumps
- Regional/company seminars (in your region or on your premises)

For concrete pump mechanics

- Training and development seminars on concrete pump

For concrete pump machinists and mechanics

- Practical days in Aichtal
- Training: Handover and induction, on-the-job training

For workshop managers and foremen

- Overview of current developments in Putzmeister concrete pumps
- Qualification at the customer workshops for requisite maintenance work

Further information can be found at: www.pm-akademie.de



The M63 at a glance

Your benefits at a glance

- Smoother, more flexible five-arm placing boom with RZ fold system, lower unfolding height and optimum slip characteristics
- Versatile use on job sites, whether concreting ceilings, working on base plates, etc.
- Work efficiently thanks to logical, sophisticated ergonomics and intuitive, simple operation of the Ergonic® 3 control system
- All information on the radio remote control display. Complete control and all the information at the workplace at all times
- Continuous delivery line with nominal diameter of DN 125
- Robust and stable due to reinforced base structure, compact boom pedestal, boom line installation, etc.
- Maintenance- and service-friendly as a result of its optimum accessibility and consistent screw concept
- Lower service costs thanks to maintenance-free components, fewer different types of components (e.g. only three standard elbow types) and smaller quantities of functional fluids



Putzmeister Concrete Pumps GmbH

Max-Eyth-Straße 10 · 72631 Aichtal / Germany
P.O.Box 2152 · 72629 Aichtal / Germany
Tel. +49 (7127) 599-0 · Fax +49 (7127) 599-520
pmw@putzmeister.com · www.putzmeister.com

