



Putzmeister



Truck-mounted concrete pump 28-4

A class of its own for multifunctional applications

More net reach, more flexibility and more cost-efficiency

The flexible 28 m Z-fold boom reaches parts where other booms would have long since given up

- The 28-4 has 1.7 m more net reach allowing an approx. 16 % more useable working area in comparison with a 26 m boom
- Thanks to the Z-fold, the 28-4 is quickly ready for use
- The flexible boom with 4 short arms has optimal slip characteristics to get around any obstacle
- With an unfolding height of just 6.50 m, ideal for pouring jobs in halls or under bridges
- The compact folded up arm assembly presents no overhang when manoeuvring

The TRD support saves space and allows greater net reach

- Minimal support area: to the front, the 28-4 needs only 5.60 m on 3-axle vehicle (6.20 m on 2-axle vehicle) and to the back, the vehicle width of 2.60 m is sufficient
- Thanks to the direct telescopic support legs, job-site obstacles are no problem



The container can be lowered hydraulically to make handling the pipes and hoses simpler (option, only available in conjunction with a 4200 mm wheel-base)

Optimum versatility thanks to its high weight capacity and comprehensive range of accessories

- Fully operational, equipped with useful accessories, the 28-4 is far below the limits of 26 t total permissible weight (for 3-axle chassis approx. 21 t). Low weight is easy on the vehicle and increases its service life.
- The machine can be easily and flexibly equipped with hose and tube magazines, storage racks, tool boxes etc.
- With a wheelbase of just 3.60 m (short-stroke pump) or 3.90 m (longstroke pump), the 28-4 is extremely agile and easy to manoeuvre, even on restricted construction sites.



Robust technology: pumps, hydraulic system and hopper

- Proven reliability – the S-transfer tube
- Free flow hydraulic system in a closed circuit (almost the only manufacturer)
- Fewer switchovers thanks to large cylinder volumes
- Extremely wear-resistant
- Very smooth running
- Low-maintenance modular pump unit
- High cylinder fill level
- Longer service life thanks to internally chromed delivery cylinders, as standard
- Low hopper fill level of approx. 130 cm (unsupported)
- Operator-friendly hopper
- Powerful pumps available for any application

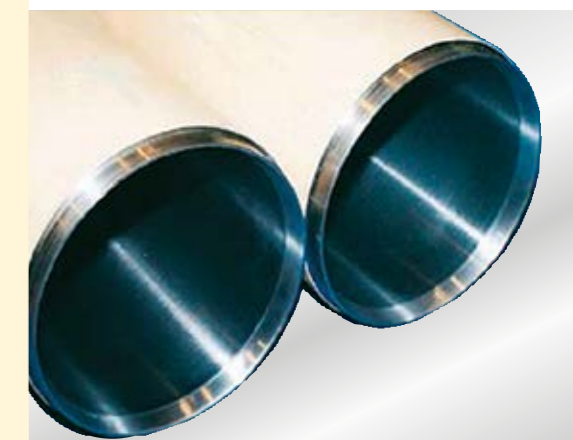
More reliability, greater efficiency, higher flexibility, lower costs

Supplied as standard:

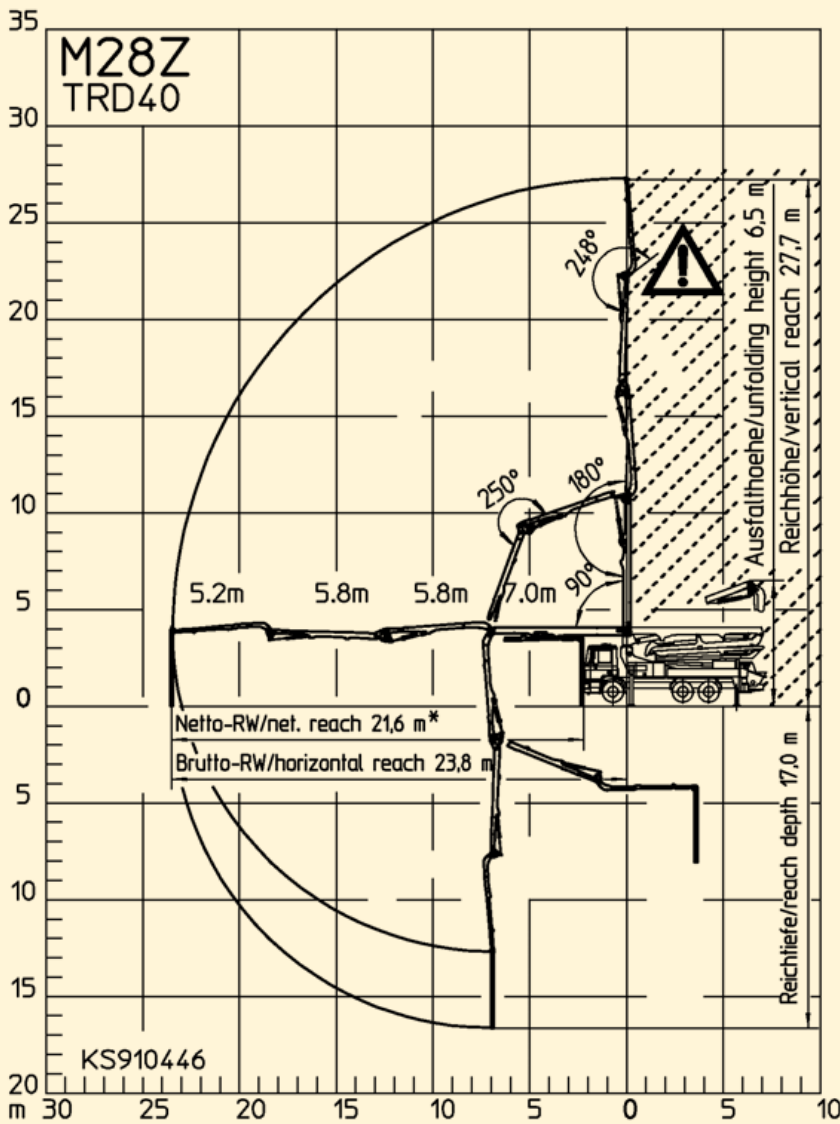
- EPS (Ergonic® Pump System)
- EOC (Ergonic® Output Control)
- EGD (Ergonic® Graphic Display)
- EGD-RC (radio with display and enhanced setting options)
- Additional cable remote control

Optional:

- EBC (Ergonic® Boom Control)
- EBC with Follow Me



Supplied as standard: Internally chromed delivery cylinders



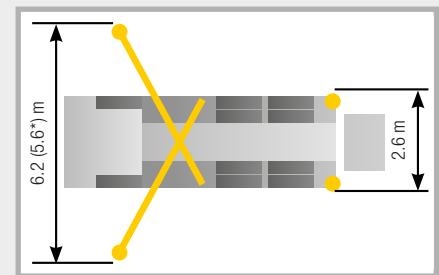
Technical data Placing boom

Folding type	4-arm Z folding (Z)
Vertical reach	27.7 m
Horizontal reach	23.8 m gross
Depth of reach	17.0 m
Unfolding height	6.5 m
Length end hose	4 m
Delivery lines	DN 125, max. 85 bar
Slewing circle	365°

General

Support width front / rear	6.2 (5.6*) m / 2.6 m
Overall length	9.89 m
Height	3.85 m

* depending on chassis



Dimensions may vary depending on model.
Total weight dependent on equipment and chassis.

Technical data – Pump

Type	Output m ³ /h	Pressure bar	Stroke mm	Cylinder Ø mm	Strokes/min
11 H	110	78	1400	230	32
11 H LS	110	85	1400	250	27
14 H	140 / 88 ¹	70 / 112 ¹	2100	230	27 / 17 ¹
16 H	160 / 108 ¹	85 / 130 ¹	2100	230	31 / 21 ¹

All data represent theoretical maximum values.

¹ rod side / piston side

Putzmeister Concrete Pumps GmbH

Max-Eyth-Straße 10 · 72631 Aichtal / Germany
P.O.Box 2152 · 72629 Aichtal / Germany
Tel. +49 (7127) 599-0 · Fax +49 (7127) 599-520
pmw@putzmeister.com · www.putzmeister.com

